

# COMPUTER GENERATED PHOTO SIMULATIONS

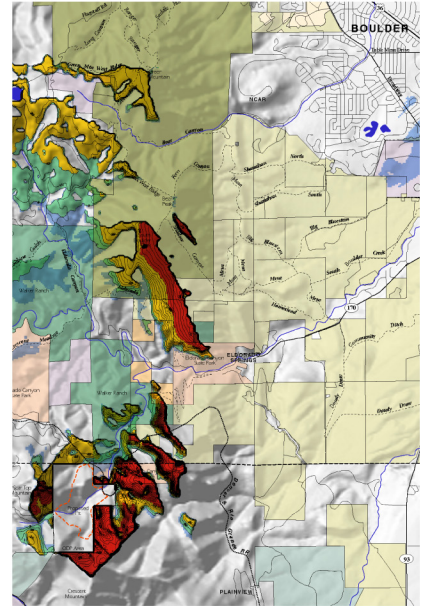
## Colorado

Photo simulations are an excellent visualization tool to help create a link between the abstract and concrete. Simulating proposed structures or landuse changes can be an effective public presentation tool to inform citizens of changes in a format that is easy to understand.

While analytical tools, such as viewshed mapping or other line-of-sight utilities, help quantify visual impacts of construction, photo simulations provide a qualitative assessment. Analytical tools locate areas where visual impacts are likely to be significant. Photo simulations help to gauge the magnitude of these impacts.

When used together, these form a powerful package for analyzing visually sensitive projects.

Rail Line Quarry, Jefferson County, Colorado



Number of acres visible of proposed quarry

Coors proposed expansion in Golden, Colorado.



Existing conditions



Photo simulation of proposed Phase 1 expansion



Photo simulation of proposed Phase 2 expansion

Photo Simulation



Existing conditions site photograph



Composite of computer model and site photo



Computer model of proposed quarry



Photo simulation of proposed quarry

RTD proposed bus stop, Boulder, Colorado



Existing conditions site photograph



Photo simulation of proposed bus shelter