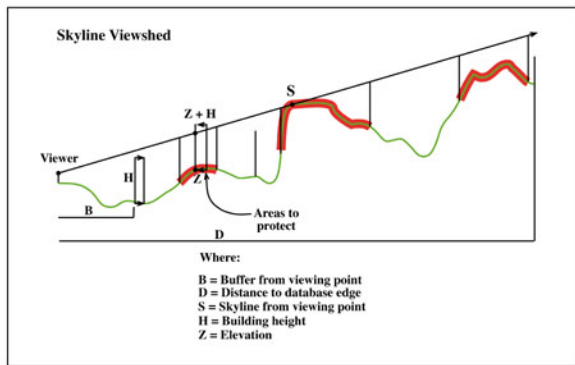


# ROUTT COUNTY, CO SKYLINE MAPPING

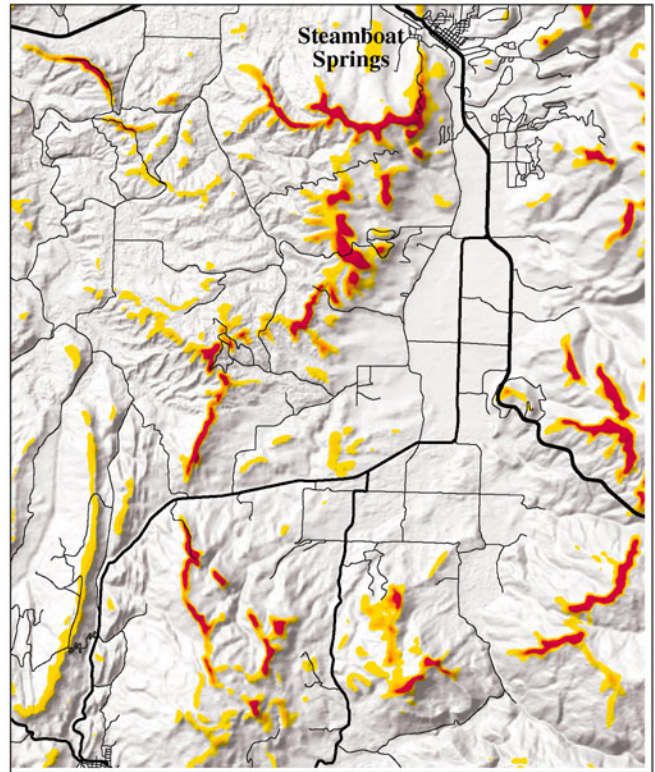
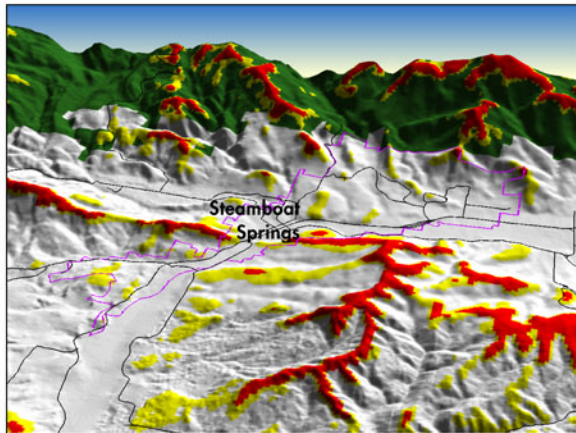
Routt County, Colorado

Perhaps no landform type is more visually sensitive than skyline regions. Routt County planners recognized this and searched for the means to map these skyline areas in order to mitigate conspicuous development. In the fall of 1996 CTM worked closely with County planners to develop innovative and flexible software that maps critical ridgeline regions. The initial pilot project contributed to skyline regulations adopted by the City of Steamboat Springs.

In 2000, CTM completed a county-wide mapping effort, based on the initial pilot. The mapping will be used to design regulations restricting building in critical skyline areas. Unrestricted by commercial software limitations, this collaborative effort between the County planners and CTM resulted in an innovative, reliable and defensible method for mapping these visually sensitive regions.



The skyline analysis is a two-pass process. On the first pass, the elevation angle to each point in the profile is determined. The maximum elevation angle occurs at the skyline location. To determine if a structure of a given height would break the line of sight to the skyline, the second pass recycles through the profile, adding the structure height to the ground elevation at each point. If the elevation angle of the structure plus ground height is greater than the elevation angle of the skyline, then that structure would break the skyline. Areas where this occurs are indicated as "areas to protect"



Steamboat Springs skyline regions. Areas in red indicate regions where a 40 foot structure would obstruct the view to the skyline from more than 8 miles of roadway.