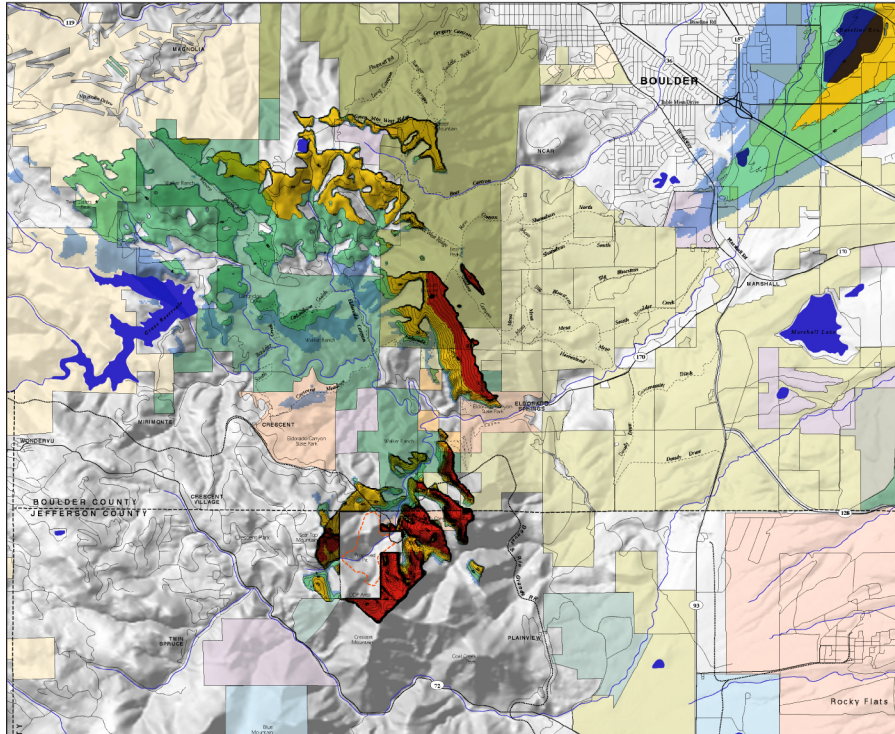


RAIL LINE QUARRY

Jefferson County, Colorado

Critical decisions on important land use issues or acquisition priorities should be based on the best information available. Conducting a computer-based visibility inventory prior to field work and site visits can save a tremendous amount of time and effort. This example showing a proposed quarry in northern Jefferson County, Colorado, illustrates some of the tools available for visual analysis.



The viewshed analysis (left) shows the surrounding regions that will see some portion of the proposed quarry.

The visibility census analysis (lower left) shows a count or "census" of the number of acres of surrounding lands that have views of a particular point within the proposed quarry.

The photo simulation (below) gives a preview of the likely appearance of the proposed quarry from a selected location.

Viewshed Analysis

Visual Census Analysis

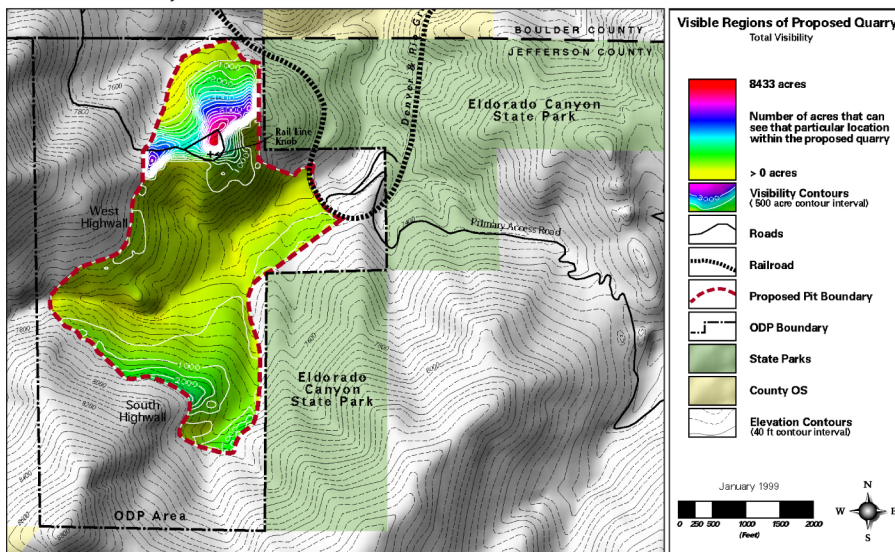


Photo Simulation

