

SOUTH TABLE MOUNTAIN VISUAL ANALYSIS

Golden, Colorado

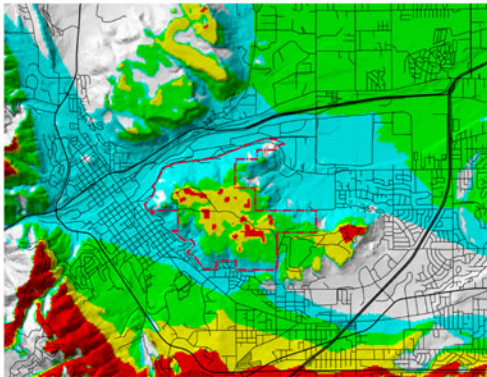


North and South Table Mountains help to create the scenic identity of Golden, Colorado. While North Table Mountain is under conservation ownership, much of South Table Mountain is privately owned and is under development consideration. A major challenge is to accommodate this development while preserving the “Old West” flavor that these landforms impart.

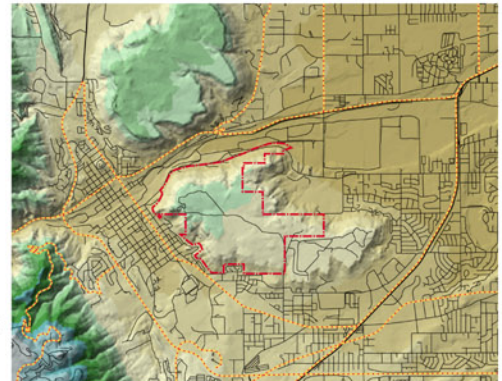
It is crucial that structures on the mesa be sited with visual impacts in mind. Broad-brush setbacks simply don’t work. In some places the setbacks impose onerous conditions on the landowner where no significant visual impacts will occur. In other areas, the setback is inadequate to mitigate impacts in visually sensitive areas.

Instead, visual issues should be addressed directly through sight-line analysis between surrounding observation points (roads, trails, etc.) and building locations on the mesa. CTM has developed a suite of analytical tools to directly assess situations of this sort.

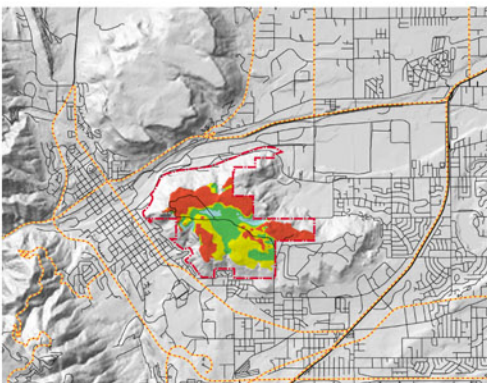
Site specific visual analysis process



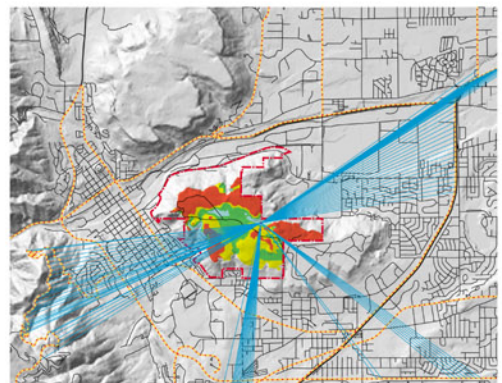
1. Generate a viewshed for the area of interest to identify which roads and trails have views to the property.



2. Isolate the roads and trails to be used in the visual analysis.



3. Calculate a visibility census map. This type of mapping shows a count or “census” of the number of points, from the selected viewing platforms, that have views of a particular point within the area of interest. The resultant map provides contours of visibility.



4. Sight lines can be generated from specific points within the area of interest to identify which of the viewing platforms has views to that location.